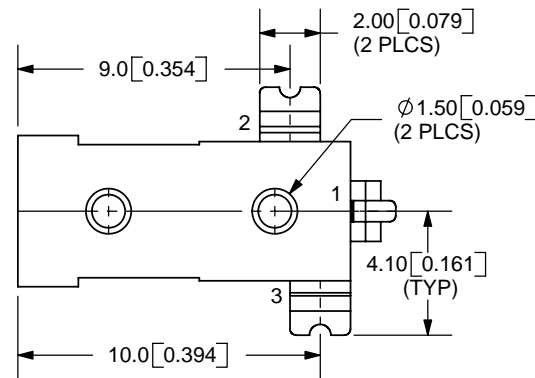
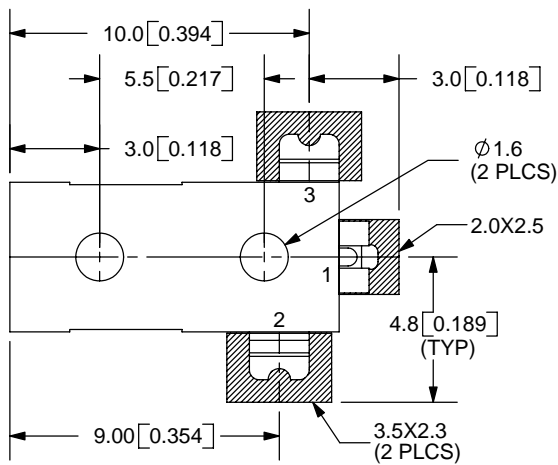
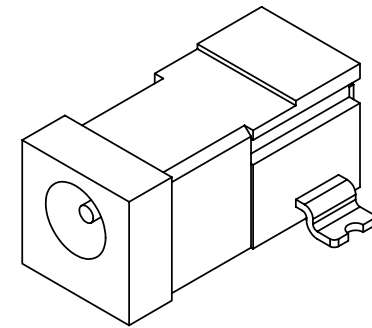
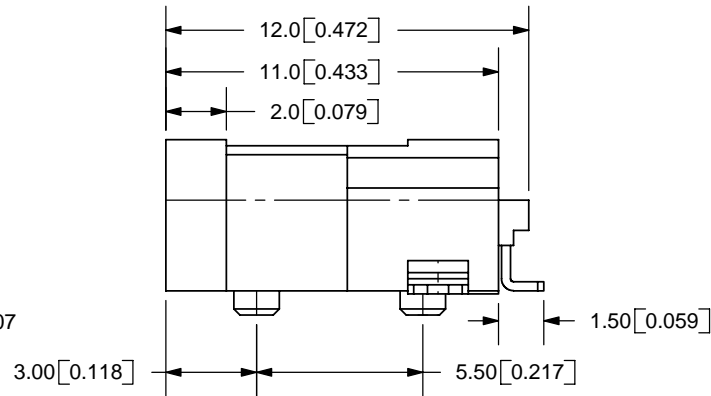
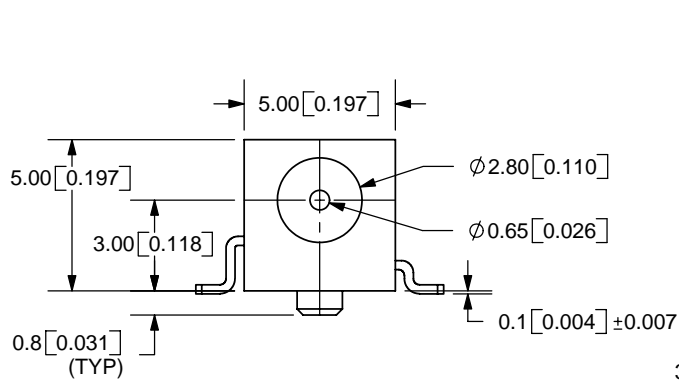


REV.	DESCRIPTION	DATE
A	NEW DRAWING	10/21/2005
B	Dimension updated	5/23/2006

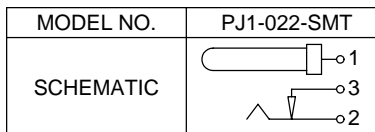


TOLERANCE:
X.X ±0.2mm
X.XX ±0.1mm
X.XXX ±0.05mm




PCB LAYOUT
TOP VIEW

SPECIFICATIONS:
RATING: 16V DC @ 2.5A
CONTACT RESISTANCE: 30m OHMS MAX
INSULATION RESISTANCE: 50M OHMS MIN: 500V DC
VOLTAGE WITHSTAND: 500V AC R.M.S. FOR 1 MINUTE
LIFE: 5,000 CYCLES



CENTER PIN DIAMETER 0.65mm

	MATERIAL	PLATING
CENTER PIN	Brass	Silver
TERMINAL 1	Brass	Silver
TERMINAL 2	Copper Alloy	Silver
TERMINAL 3	Brass	Silver
HOUSING	PA6T	



9615 SW Allen Blvd., Ste. 103
Beaverton, OR 97005
Phone: 503-643-4899
800-275-4899
Fax: 503-372-1266
Website: www.cui.com

TITLE: 0.65mm DC POWER JACK, SURFACE MOUNT		REV: B
PART NO. PJ1-022-SMT		UNITS: MM [INCHES]
DRAWN BY: ZRJ	APPROVED BY:	SCALE: 4:1